



Berklee
College of Music

INSIDER'S GUIDE

Your First Year at Berklee

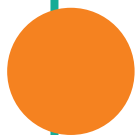
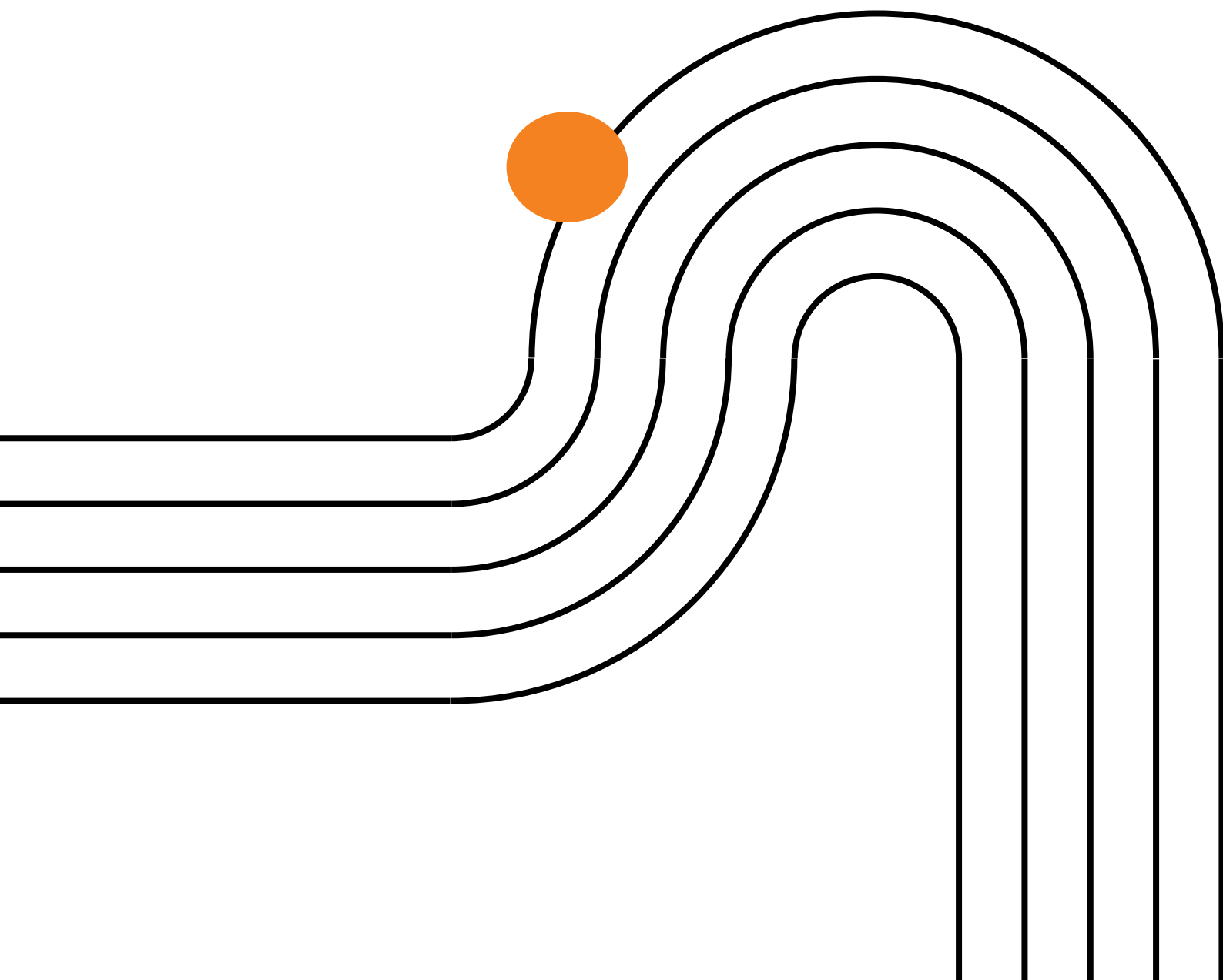


Table of Contents

| | | |
|----|--|---|
| 4 | | YOUR FIRST WEEK |
| 9 | | GETTING TO KNOW CAMPUS |
| 11 | | YOUR BERKLEE |
| 12 | | Days at Berklee |
| 13 | | Nights at Berklee |
| 14 | | PERSONALIZED SUPPORT FOR STUDENT SUCCESS |
| 15 | | YOUR FIRST SEMESTER |
| 16 | | Bachelor of Arts Curriculum |
| 17 | | Bachelor of Music Curriculum |
| 21 | | YOUR SECOND SEMESTER |
| 22 | | Prepare to Declare Your Bachelor of Music Major |
| 25 | | Career Center |
| 26 | | CAMPUS DIRECTORY |

Your first year at Berklee College of Music is a time for expanding your mind, for trial and error, and for learning new things about yourself. As you enter into this phase of life away from home, we'll be here every step of the way to support you. Keep reading to get a sneak peek of all the exciting opportunities you'll find in your first year.



Your First Week

NEW STUDENT ORIENTATION

Berklee hosts a full week of **orientation events** to help you learn all about campus, prepare for classes, and connect with your classmates and professors. This is a week full of excitement as your class gathers together for the first time.

EVENTS INCLUDE:

- **Performances**
- **Campus Tours**
- **Counseling Drop-Ins**
- **Identity Socials (LGBTQ+, Students of Color, Women, International Students, Commuter, 25+)**
- **Video Game Tournaments**
- **A Conversation with the Deans**
- **Jam Sessions**
- **Campus Safety**
- **Mental Health Discussions**
- **Financial Planning and Literacy**

...and more

WHAT WAS YOUR FAVORITE PART ABOUT NEW STUDENT ORIENTATION?



“My favorite part about orientation was meeting other entering students. I met one of my friends in my orientation group and we hit it off right away!”

–Trinity Reyes-Escobar,
Music Business/Management



“Jam night, the curbside parties, and the student concert.”

–Alexandra Maes,
Performance and Music
Production and Engineering



“The block party! It was a great opportunity to meet people.”

–Korri Spruyt, Songwriting



“My favorite part was the encounter with different people with diverse cultural backgrounds, experiences, and perspectives. It was a great opportunity to network and build strong relationships from day one!”

–Armen Barberia Hovhannisyan,
Performance



BACHELOR OF MUSIC: PLACEMENT AUDITIONS AND TESTS

In your first week, you'll complete **auditions and proficiency exams** to help us place you into appropriate ensembles and classes, such as arranging, harmony, and ear training. These assessments ensure that you start in the right place for your **core music** studies. *Students in the Bachelor of Arts program do not need to do placement auditions.*

TIPS FOR GIVING THE BEST PLACEMENT AUDITION?



"I would really recommend choosing a song or piece that you feel very comfortable with, that emphasizes your strengths on your instrument. Over time, and from advice I've received from many professors, I've learned that the simplest things can be the most impactful if done very well. I would also recommend getting comfortable playing different time feels and grooves, and practicing sight-reading. When the time comes for your audition, warm up a bit, don't be too nervous, and enjoy it!"

–Michaela Colet, Music Production and Engineering and Film Scoring



NEW STUDENT AND FAMILY PROGRAMS

The moment you're accepted, Berklee **welcomes your family** into the community, offering special events, support resources, and a monthly newsletter with information on upcoming events and deadlines. To learn more, browse **these FAQs** for parents and families.

Family Orientation

Family Orientation is a program for parents, guardians, and friends who want to learn how to support you during your time away at college, and how to stay engaged with their new community.

Family Weekend

A celebration for all current students and families, Family Weekend brings together parents and guests from across the world to experience the rhythms of student life at Berklee.



THE BERKLEE VIBE

With more than 5,000 students and nearly 900 faculty members, Berklee's campus, located in Boston's vibrant Back Bay neighborhood, is artsy, creative, and has a style of its own.

Our students hail from more than 100 countries and have diverse backgrounds, but they all have one thing in common: a deep love for music.

Whether you're into rock, pop, jazz, funk, classical, hip-hop, EDM, or all of the above, you're likely to find others who share your interests.





YOUR DEPARTMENT

For Bachelor of Music students, your primary instrumental department helps you navigate your major and find performance opportunities on and off campus.

For Bachelor of Arts students, your program department will guide you through your four-year degree and support you in building your professional network.

PRO TIP

Visit your department chairs during their office hours to build a face-to-face relationship.

Each department is led by a chair, and often an assistant chair, who oversees programming and curriculum. Get to know them early on—later in your Berklee career, they may introduce you to a visiting artist, ask you to join a master class, or help you find your next gig.

Getting to Know Campus

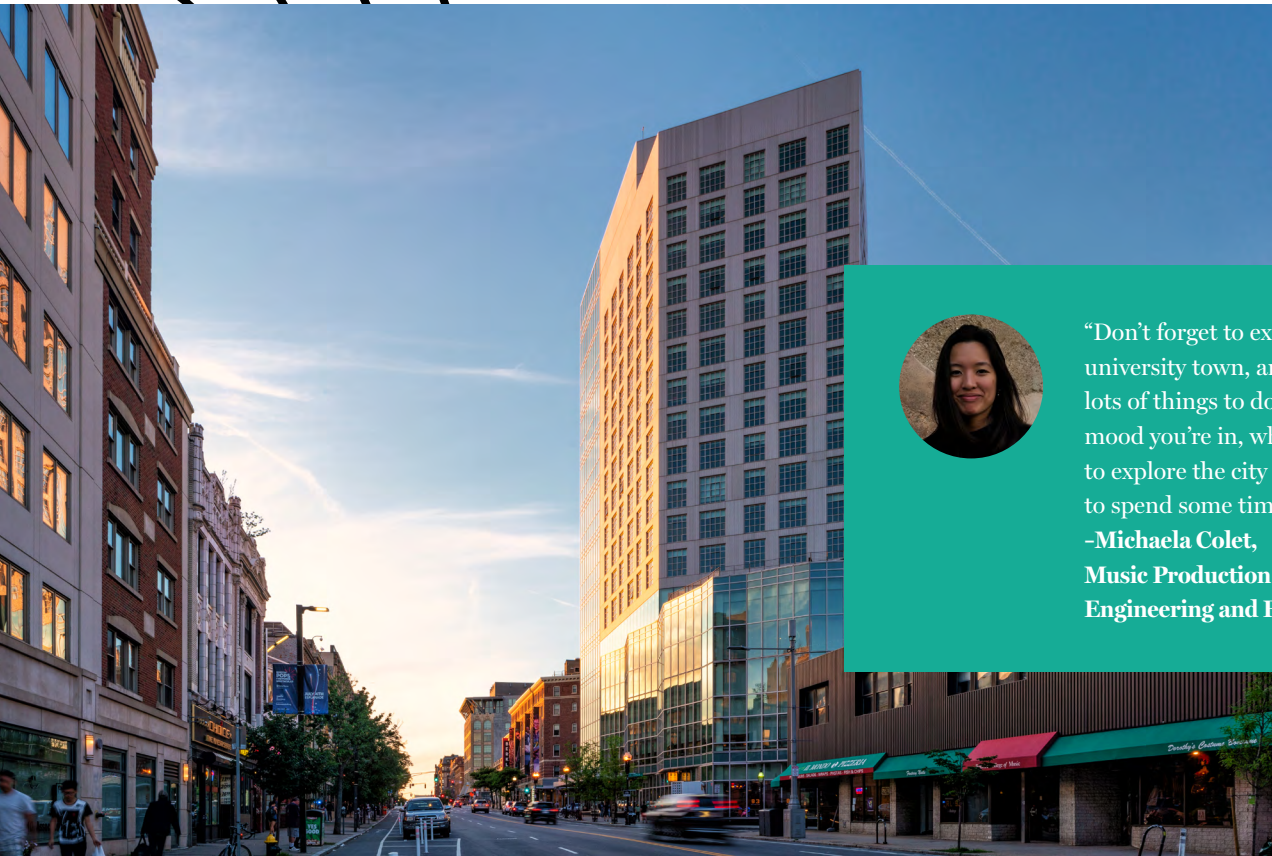
Located on the corner of Boylston Street and Massachusetts Avenue, Berklee's campus is in the heart of Boston. Whichever way you turn, you're sure to find something to inspire you, such as a beautiful garden, a lively café, or a funky local art market. You'll find students commonly hanging out in courtyards, lounges, the Berklee Dining Hall, or at nearby coffee shops.

We refer to most of our buildings by their street number. For example, the oldest building on campus is located at 1140 Boylston Street, but we just call it "1140."

EXPLORING BOSTON

Boston is a historic city, home to North America's first subway system, first public park, and first public school. A short walk from campus you'll find iconic performance venues, including Symphony Hall, where the Boston Symphony Orchestra performs, and famous sports stadiums, such as Fenway Park and TD Garden, which double as music venues. Day or night, Boston has something for everyone to enjoy.

Check out these nearby all-ages music venues: Club Passim, City Winery, and Berklee's own Red Room at Cafe 939.



"Don't forget to explore! It's a university town, and there are lots of things to do, for whatever mood you're in, whether you want to explore the city with friends or to spend some time alone."

–Michaela Colet,
Music Production and
Engineering and Film Scoring

GETTING AROUND BOSTON

Boston's public transit system, the Massachusetts Bay Transportation Authority—more commonly known as the MBTA, or simply the T—operates the city's four main subway lines: Green, Orange, Red, and Blue. Finding your way around town can be tricky at first, but once you **check out a map** and read **this beginner's guide**, you'll start to get a better feel for it. The two closest stops to Berklee are Hynes Convention Center station on the Green Line and Massachusetts Avenue station on the Orange Line.

Download the **Transit app** before you arrive to the city.

STUDENT DISCOUNTS

Your Berklee ID gets you free or discounted entry into many area museums, including:

- **Institute of Contemporary Art (ICA)**
- **Isabella Stewart Gardner Museum**
- **Museum of Fine Arts (MFA)**
- **Museum of Science**



WHAT'S YOUR FAVORITE PART ABOUT BOSTON?



“There are a lot of college students walking around, and having all these different schools around can help provide resources or collaborations.”

—Stella Kaplan, Film Scoring

Your Berklee

Berklee is a place where you can collaborate as well as discover and expand your horizons. With the city of Boston as your backyard, you'll meet people from all over the globe, and with each new connection, you'll learn about their history, their influences, and their world. Don't be afraid to step outside your comfort zone and seek out new ideas and experiences—inspiration can come from unexpected places.





DAYS AT BERKLEE

A typical day at Berklee includes attending classes, studying, or rehearsing, but there is also so much more. You can connect with friends around campus, and find yourself involved in a project, recording session, or performance.

Many students grab lunch from the Berklee Dining Hall (known by most students as the caf) or stop at one of the nearby restaurants to finish homework. You can also take advantage of the **Learning Center**, core music tutoring, and our quiet study lounges.

Broaden Your Interests

While earning your degree is your main focus at Berklee, it's just as important to find time for your other interests. Check out a book from the Boston Public Library, explore one of the city's historic neighborhoods, or play frisbee in the park.

WHAT DOES A TYPICAL DAY LOOK LIKE?



"I like to start off my day with exercising—it gets the endorphins flowing and prepares me for an exciting day at Berklee! I then prepare for classes. I typically have 2–3 per day. Some days I have clubs that I attend, such as the Women's Film Initiative, the Berklee Women Musician's Network, and the Berklee Film Scoring Network. Once classes and clubs are done for the day, I will be doing homework, practicing, and having band rehearsals."

–Stella Kaplan, Film Scoring



"I usually wake up early, get ready, and meet friends for breakfast. I have about two to four classes a day, and usually have an hour or two between classes in which I do homework in one of the lounges. On lighter days, I finish classes in the morning, then go to my work study job in the afternoon. I spend most lunches and dinners with friends in the caf, then finish any homework and spend the evening having some downtime."

–Korri Spruyt, Songwriting

NIGHTS AT BERKLEE

After 10:00 p.m. the Berklee Dining Hall transforms into a stage for open mics and student-run shows. Artists and engineers settle into campus studios for late-night recording sessions. Students are writing, rehearsing, and collaborating. Regardless of the hour, the creativity is always flowing.

HOW DID YOU SPEND YOUR FIRST WEEKEND AT BERKLEE?



“After making a few friends, we explored Boston and Back Bay.”

–**Alexandra Maes, Songwriting and Music Production and Engineering**

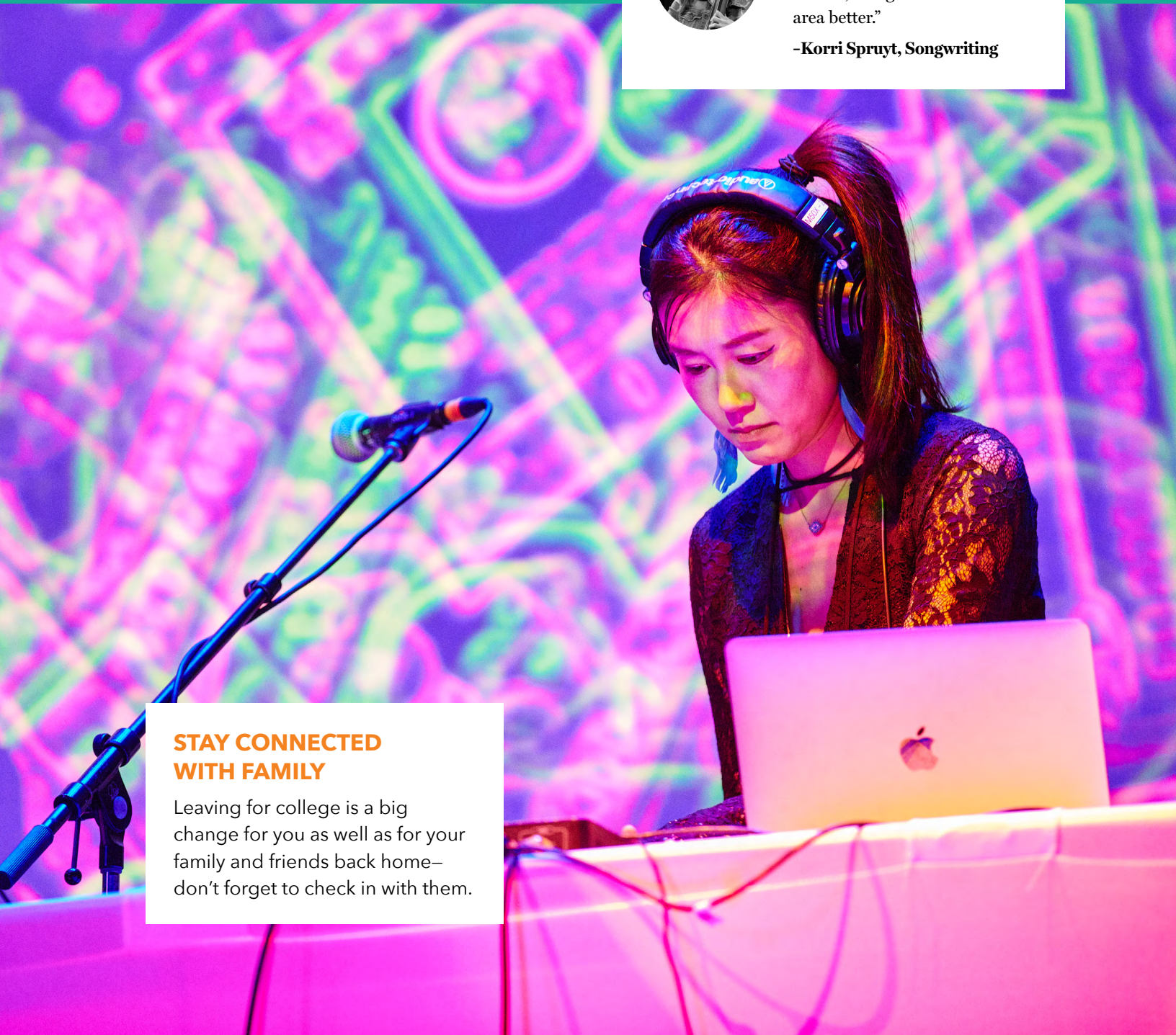


“I walked to the Charles River and the Common with some friends, and got to know the area better.”

–**Korri Spruyt, Songwriting**

STAY CONNECTED WITH FAMILY

Leaving for college is a big change for you as well as for your family and friends back home—don't forget to check in with them.





Personalized Support for Student Success

Your student success advisor will provide personalized, proactive, and holistic support, connecting you to the resources you need to succeed. We are committed to ensuring that all students have the resources they need to thrive, and the Berklee Bridge—a personalized network of advisors and services—was created to do just that. The Bridge will support your academic success, artistic vision, personal well-being, and career goals by connecting you with the right specialists to help you navigate every aspect of your Berklee journey. berklee.edu/bridge

PEER

Student mentors serve as your coaches and role models, providing advice on academics, careers, and student life.

ONE STOP

Frontline support for registration, records, tuition, billing, scholarships, and aid—all in one centralized location.

MAJOR

Guidance on navigating your chosen field of study and achieving academic goals.

ACCESSIBILITY

Accommodations you may need to support your academic, housing, or dining requirements.

INTERNATIONAL

Assistance for international students with visas, F-1 status maintenance, and managing travel documents.

CARE SUPPORT

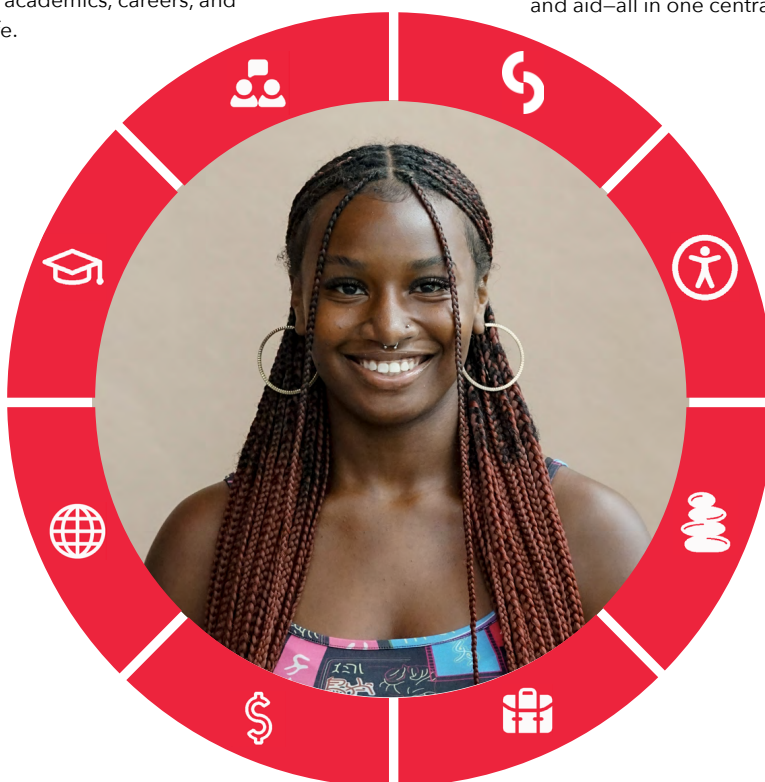
Proactive health education and wellness services; connect to services you may need both on and off campus.

FINANCIAL SUPPORT

Financial aid counseling services, guidance on FAFSA and CSS, and scholarship and grant awards.

CAREER

Advice and workshops on building your résumé, job search strategies, business planning, internships, and more.



Your First Semester

ENTERING STUDENT SEMINAR

All students take a first-semester Engaging Seminar (LENS). In this course, you'll connect with others in the Berklee community, explore what it means to be an artist in today's world, and examine a range of topics, ideas, and trends through multiple lenses.

TIPS FOR A GREAT FIRST SEMESTER:

- Get a calendar and plan out every hour of your day. It'll be easier to keep track of your time.
- Don't pack too many clothes.
- Walk as much as possible. It'll help clear your mind so you can be more creative.
- Be yourself and don't try too hard to fit in.

- **ALLY EVANS, SONGWRITING**



"There are so many resources, including your teachers, friends, and higher-semester students. Don't be afraid to ask."

-Korri Spruyt, Songwriting

Bachelor of Arts Curriculum

In the Bachelor of Arts in Music Industry Leadership and Innovation program, students take **courses** covering major sectors of the music industry—artist management, music publishing, record label operations, live music, legal, and marketing—as well as Innovation mindsets and methodologies. Choose from courses such as *Fundamentals of Innovation*, *Record Company Operations*, and *Blockchain and Related Technologies*, to name a few.

SAMPLE FIRST SEMESTER SCHEDULE

INTRODUCTION TO DESIGN 2 CREDITS
●●

INTRODUCTION TO MUSIC BUSINESS 2 CREDITS
●●

THE CREATIVE ENTREPRENEUR MINDSET 2 CREDITS
●●

INTRODUCTION TO COLLEGE WRITING 3 CREDITS
●●●

ENGAGING SEMINAR 2 CREDITS
●●

GENERAL ELECTIVES 4 CREDITS
●●●●

15 CREDITS
●●●●●
●●●●●



Bachelor of Music Curriculum

All Bachelor of Music students start at Berklee undeclared, which means you have a full year to explore your interests before committing to a major at the end of your second semester.

We'll build your entire **first-semester schedule**, which consists of the following: an ensemble, a private lesson, an ear training course, an arranging or harmony course, a music technology course, a writing or other liberal arts and sciences course, and your first-semester seminar. In total, this adds up to 16 credits, which is the maximum credit limit for full-time degree students (12 is the minimum).

CORE MUSIC

At the center of the Bachelor of Music education is our core music curriculum. These courses are designed to help build and nurture your comprehensive skills as a contemporary musician.

Remember those **placement tests** we mentioned? This is where they come into play. Based on your results, you'll be placed into a level for each course. So, if you're an arranging whiz but an ear training novice, you'll be placed in an advanced-level class for the former and a beginner-level class for the latter.

SAMPLE FIRST SEMESTER SCHEDULE

MUSIC APPLICATION AND THEORY 4 CREDITS
●●●●

EAR TRAINING 1 2 CREDITS
●●

INTRODUCTION TO MUSIC TECHNOLOGY 2 CREDITS
●●

PRIVATE INSTRUCTION 2 CREDITS
●●

ENSEMBLE 1 CREDIT
●

ENGAGING SEMINAR 2 CREDITS
●●

INTRODUCTION TO COLLEGE WRITING 3 CREDITS
●●●

16 CREDITS
●●●●●●●●
●●●●●●●●

PRO TIP

If you have significant experience in any of these areas, you may be eligible to earn credits by testing out of courses. **Visit this page** to learn more about credit by exam.

Arranging

The arranging core will teach you how to write for a rhythm section, notate music manually and digitally, and combine acoustic, electronic, and MIDI instruments into your projects. You'll typically start with Music Application and Theory then advance to Arranging 1, unless you place into a higher-level course.

Conducting

In these courses, you'll learn how to lead an ensemble through an instrumental or vocal piece. You'll take two conducting courses to meet your core requirements, which many students complete in their second year.

Ear Training

The goal of ear training is to develop your ability to hear musical intervals, harmony, and melody. All students must complete four ear training courses to meet the basic core requirements. Some majors, including music therapy, composition, and music education, have additional requirements.

Harmony

Harmony courses explore harmonic practice, melodic development, and the relationship between melody and harmony. You'll take up to Harmony 4 to meet your core requirements (over the course of four semesters). However, if you place into a higher level, you'll earn credit for the preceding courses after you complete your first class.

Tonal Harmony and Counterpoint

The tonal harmony and counterpoint core differs from the harmony core in that it's based on models from the baroque, classical, and romantic eras of European classical music. It consists of three required courses that total seven credits.

Music Technology

In your first semester, you'll take Introduction to Music Technology unless you test into a more advanced course. After that, you'll follow your major grid and take the required music technology courses for your degree program.

Performance

The performance core includes your private lessons, instrumental labs, and ensembles. You'll complete these 12 credits over the course of four semesters. If you choose to pursue the performance major, you'll take these classes throughout your four years.

Liberal Arts and Sciences

A third of your degree consists of liberal arts courses. In general, liberal arts refers to topics including the arts and humanities (such as literature, drama, and language), social sciences (such as psychology and economics), mathematics, and natural sciences. At Berklee, we teach these subjects through the lens of music and creativity.

Ensembles

Berklee offers more than 350 ensembles ranging from rock, funk, and hip-hop to Afro-pop, Middle Eastern fusion, and baroque synthesizer music. They provide you with the opportunity to learn songs by your favorite artists, create your own arrangements, and explore what it means to make music with others.

As a Bachelor of Music student, you'll participate in ensembles each year, beginning with your first semester. We'll assign your first ensemble based on your experience level and your musical interests. After that, you'll register for ensembles on your own, choosing from a large list of artists, genres, and styles.

AFRO-POP **CELTIC MUSIC** **MIDDLE EASTERN FUSION**
MUSIC FROM ITALY **PERFORMANCE ENSEMBLE** **QANTARA BERKLEE**
FUNK **TURNTABLE ENSEMBLE** **YELLOWJACKETS ENSEMBLE**
THE MUSIC OF WES MONTGOMERY **FLUTE CHOIR** **FUTURE POP ENSEMBLE**
CARIBBEAN MUSIC **THE MUSIC OF JONI MITCHELL** **SPOKEN WORD**
THE MUSIC OF JARRETT, HANCOCK, AND COREA **BAROQUE SYNTHESIZER**
ART MUSIC OF BLACK COMPOSERS **RAINBOW BIG BAND**
CUBAN MOVES AND GROOVES **THE CIRQUE DU SOLEIL ENSEMBLE**
BLUEGRASS **THE MUSIC OF JIMI HENDRIX** **SALSA ENSEMBLE**
VOCAL MUSIC OF SOUTH AFRICA **THE MUSIC OF THE BEATLES**
FILM SCORING STUDIO ORCHESTRA **MUSICAL THEATER CHORUS**
BERKLEE ROOTS AND GOSPEL ENSEMBLE **INDIAN MUSIC ENSEMBLE**
THE MUSIC OF PAT METHENY **RETRO FUNK/FUSION** **ARIANA GRANDE ENSEMBLE**
BALKAN CHOIR **MUSICAL THEATER ORCHESTRA**
ELECTRONIC IMPROVISATION **THE MUSIC OF SOULIVE AND LETTUCE**

WHAT'S YOUR FAVORITE ENSEMBLE SO FAR?



“As a mandolin principal, I have really liked being in String Department–led ensembles. I was in a Celtic ensemble in my third semester and a David Grisman ensemble in my fourth semester, and I had a blast. The String Department is awesome!”

-Stella Kaplan, Film Scoring



“My favorite ensemble has been my first-semester funk ensemble. I had never focused solely on playing funk, and it really helped me get out of my comfort zone and grow as a musician.”

**-Trinity Reyes-Escobar,
Music Business/Management**



“I’m part of the roots program (which you can join, too!), and I’ve loved all of their ensembles, but especially the old-time ensemble and the tune-writing ensemble.”

-Korri Spruyt, Songwriting



“My favourite ensemble has been the Middle Eastern/Flamenco Ensemble, which I did while I was spending a semester abroad at the Berklee Valencia campus. We got to really explore the roots of flamenco music, understanding the musical influences between Middle Eastern and Spanish music, as well as the history behind it. The ensemble itself was a lot of fun—there was a lot of improvisation, but also a lot of solid fundamental knowledge on the elements of flamenco music. There was also an option to go on a school trip to Granada, a historical and culturally rich city in Spain, which was a whole other level of immersion into the music of this facet of Spanish culture.”

**-Michaela Colet, Music Production and
Engineering and Film Scoring**



Your Second Semester

YOUR SCHEDULE

Your second-semester schedule focuses on the next level of your degree curriculum. Certain courses require prerequisite classes, so it's important to research your program curriculum. To help you stay on track, check out our [Bachelor of Music major grids](#) or review the [Bachelor of Arts curriculum overview](#).

REGISTER FOR CLASSES

You'll choose your second-semester classes when you register. Talk to your academic advisor to make sure you're following the right path.

OFFICE HOURS

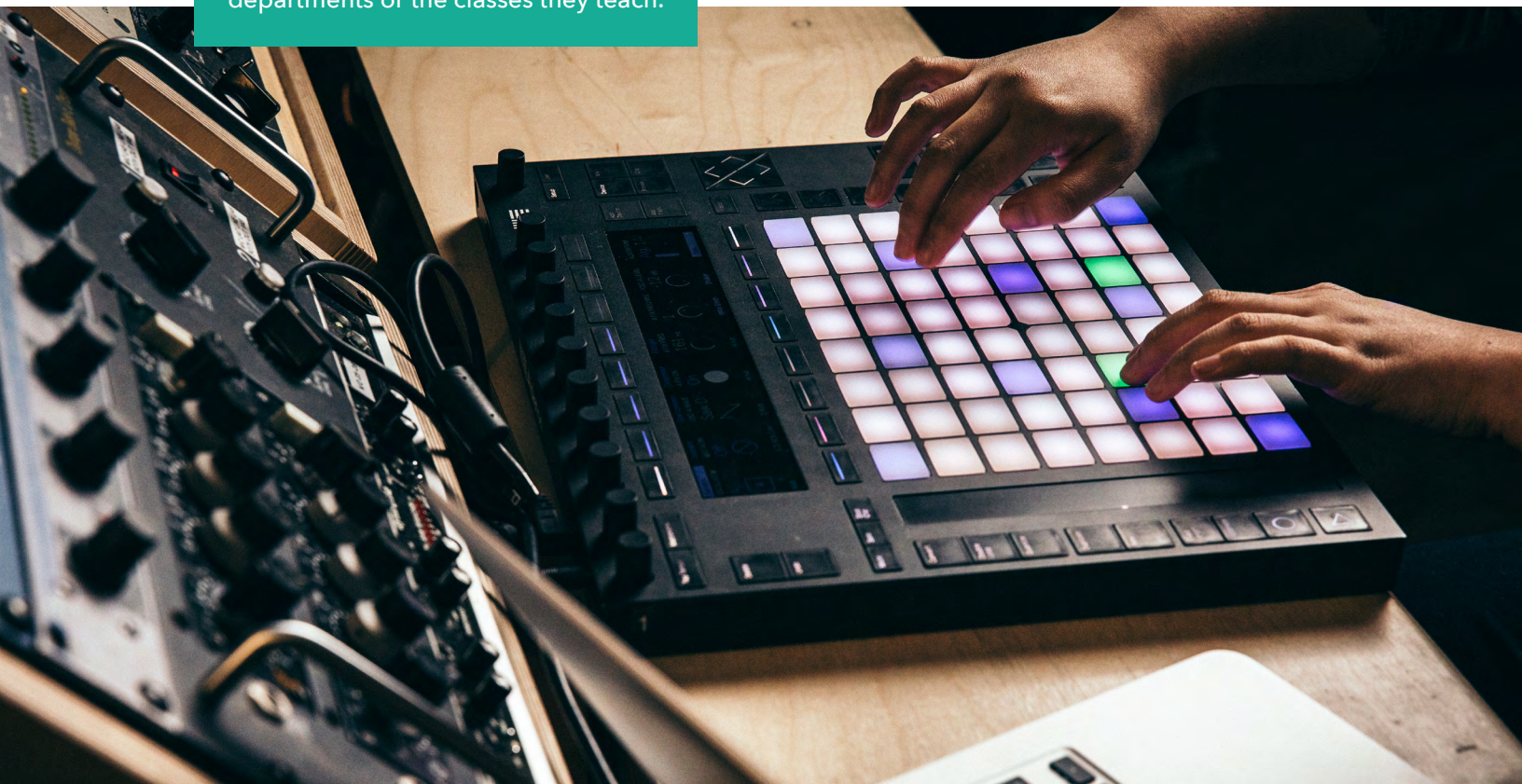
Teachers have time set aside each week to meet with students. You can go to any faculty member's office hours to ask them about their departments or the classes they teach.

SPRING BREAK

Every spring semester in early March, Berklee closes for one week to give students and faculty a break from regular classes. Many students take this time to reconnect with family and friends at home, but if you're looking for a musical experience, be sure to check out Berklee's industry trips to Atlanta, Nashville, Los Angeles, and New York City.

WHY WE LOVE BERKLEE SPRING BREAK TRIPS:

- Studio tours
- Live recording sessions
- Meeting Berklee alumni
- Networking
- Connecting with industry experts
- Music immersion
- Travel with fellow students and faculty



Prepare to Declare Your Bachelor of Music Major

For a Bachelor of Music student, perhaps the most important part of the second semester is declaring your major, so it's important to go into this term with that in mind. By researching our majors, connecting with industry professionals, and learning from experts at the **Career Center**, you'll be on your way to choosing the major that is perfect for you.

BACHELOR OF MUSIC MAJORS

There are **15 majors** and more than **30 minors** available to Bachelor of Music students. We suggest exploring different majors early on to give yourself as much time as possible to learn about your options.

Even if you come in knowing exactly what you want to do, it's good to keep an open mind. You'll have many new experiences in your first year that will expose you to interests you didn't know you had.

Black Music and Culture

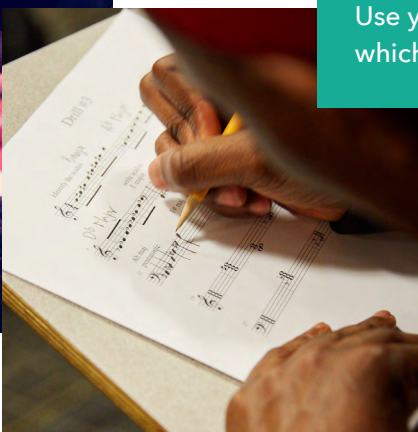
Engage with and contextualize the historical, social, artistic, and cultural contributions of the global African diaspora at the intersection of arts and culture—namely music, dance, and theater.

Composition

Learn how to orchestrate, arrange, and transcribe music while studying historical masterworks. You'll improve your skills by working with performers, leading rehearsals, and conducting and producing performances. Graduates find jobs as arrangers, composers, conductors, and musical directors.

Contemporary Writing and Production (CWP)

Explore your role as a writer, producer, and conductor while learning how to create and produce professional music recordings. Many CWP alumni pursue careers as orchestrators, producers, and writers in a variety of creative settings.



PRO TIP

Use your career goals to inform which major is best for you.

Electronic Production and Design (EPD)

If you want to master the use of electronic music production and sound design tools, this major is for you. In this program, you'll gain a comprehensive understanding of all aspects of electronic music, including audio signal flow, recording and mixing techniques, how to design original synthesizer sounds, and more. You'll find our alumni working as foley artists, audio directors, and audio programmers.

Film Scoring

As a film scoring major, you'll develop a keen ability to tell stories through your compositions for film, TV, video games, and visual media as well as gain the creative and entrepreneurial skills required to succeed in today's entertainment industry. Alumni have scored some of the most popular titles in contemporary media, including *Captain Marvel*, *Overwatch*, and *Game of Thrones*.

Game and Interactive Media Scoring (GAIMS)

Rooted in the practice of collaboration, students in the GAIMS major learn how to write, mix, and program music scores, with the opportunity to score games designed by students from top video game development programs. In addition to learning techniques to pursue a career in music and media, you'll develop your professional skills, such as creative development, contract negotiation, and making demo reels.

Independent Recording and Production

Students in the independent recording and production major generally have one goal in mind: work directly with clientele to create top-level music. You will explore concepts to help you manage your career as an independent record-maker, including developing your musicality, gaining dexterity with your DAW, identifying business strategies, and much more.

Jazz Composition

Do you live and breathe jazz and want to make a career of your original compositions and arrangements? In this major, you'll hone your vision and skill as a composer, analyze the work of jazz masters, learn to write for a variety of ensemble sizes, and gain an array of arranging and compositional tools used in contemporary styles.

Music Business/Management

This program is designed to prepare you to be a creative, innovative, and adaptable entrepreneur in the ever-changing music and entertainment industry. If you want to be an artist manager, talent buyer, music publisher, marketing director, or the founder of a startup, this may be the right major for you.

Music Education

In this major, you'll learn the skills and techniques shaping the future of music education and gain real-world experience teaching in a public school environment. Alumni of this program have gone on to work in classrooms and private studios, lead international music programs, and earn master's degrees from Harvard and other top schools.

Music Production and Engineering (MP&E)

As an MP&E major, you'll learn the ins and outs of recording, editing, mixing, and mastering for live ensembles and electronically produced sources. With access to Berklee's recording studios, you'll work collaboratively with classmates to record and produce their music and your own compositions.

Music Therapy

Music therapy majors will explore the various ways music can be used to heal others and how it helps develop our emotional, intellectual, and social abilities. Through a semester-long clinical internship, you'll work directly with clients while studying under mentors and leaders in the music therapy and medical fields.

Performance

This program does more than develop your skills as a live performer. It teaches you to think critically about music and its role in society, to deeply understand the capabilities of your instrument and its cultural influences, and to expand your knowledge of improvisational practices. Performance alumni tour internationally, are featured on countless Grammy Award-winning albums, and perform on Broadway, both on stage and in the pit.

Majors that require an application before you can declare:

- Electronic Production and Design
- Music Education
- Music Production and Engineering
- Music Therapy

Professional Music

For students looking to blaze their own trail, the professional music major allows you to custom-design an educational program that best aligns with your career goals. Working with a faculty advisor, you'll choose up to three concentrations from more than 30 options ranging from composition and production to performance and business.

Songwriting

Master the art of lyric writing, melodic and harmonic flow, and music production in this program made for the modern songwriter. You'll explore your favorite genres while developing your unique vision, sound, and style as an artist. Collaboration is a key feature of this program, as many students find bandmates and long-term writing partners through class projects.

BERKLEE CAREER CENTER

The **Berklee Career Center** is your number-one source for building professional skills such as résumé preparation, career planning, interviewing, and much more. Our team of expert advisors specialize in **music-industry career paths** and can help you seek out relevant **internships**, **student employment**, and local gigs.

You will declare your major by the end of your second semester.

PRO TIP

It is never too early to start building your network or planning your future internship. To connect with an advisor, just stop by or schedule an appointment after you get settled into your Berklee home.



Campus Directory

Here's a summary of common services, what they are, and where to find them around campus:

921 BOYLSTON STREET

Student Accounts: questions about your bill or payments

Student Financial Services: help with scholarships and financial aid

Registrar: questions about your schedule

Academic Advising: questions about our majors and academic services

David Friend Recital Hall: performance space where you'll see concerts and events from students, faculty, and visiting artists

One Stop Student Services: questions about check-in or registration, tuition and billing, scholarships and financial aid, and more.

160 MASSACHUSETTS AVENUE

Berklee Dining Hall: our large campus dining hall that turns into a performance venue after 10:00 p.m.

Residence Halls: a place for you to live, practice, and lounge

Production Suites: professional studios and scoring labs used for classes and projects

150 MASSACHUSETTS AVENUE

Classrooms, Practice Rooms, and Ensemble Rooms: where you'll learn and build your skills

Stan Getz Library: a place to read, study, and find music scores, academic research, audio and video recordings, and more

Core Music Tutoring: personalized help with your core music curriculum from upper-semester students

1140 BOYLSTON STREET

Berk and Oliver Colvin Hall Recital Halls: smaller venues where many students present recitals (also known, respectively, as 1A and 1W)

Archie's Café: a place to grab a quick bite in between classes

Steve Heck Room: a lounging space regularly used for studying, relaxing, and meeting up with friends

7 HAVILAND STREET

Home to the Liberal Arts and Sciences, Music Business/Management, and Music Therapy departments, with an art gallery on the second floor and a courtyard that's great for relaxing between classes



The moment you are accepted into Berklee College of Music you will be welcomed into an inspired community of musicians and innovators. Our faculty and staff will help guide you towards your future career and encourage you to explore the depths of your passion. With your classmates at your side, you'll be supported by a family of peers, teachers, and mentors. Throughout your first year, you'll learn things about yourself you never knew while preparing for all the opportunities that are yet to come.



CONTACT US

We are here to support you. If you have questions about what to expect during your first year at Berklee, contact us at admissions@berklee.edu or +1 617-747-2222. We look forward to welcoming you and your family into ours.